

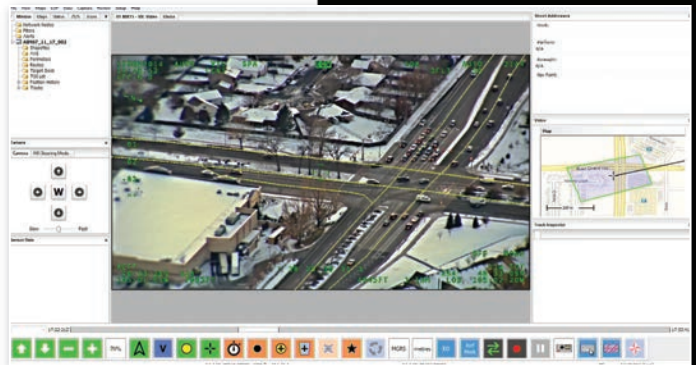
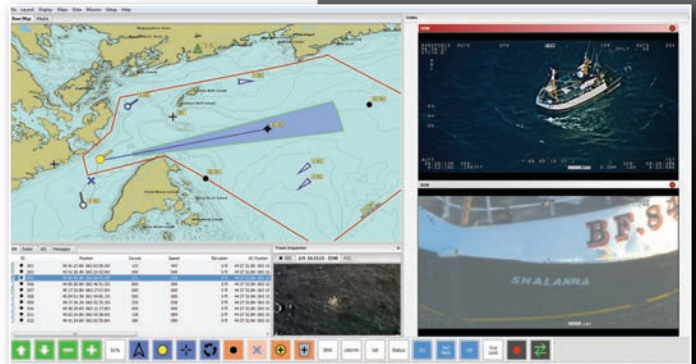


**WESCAM Kinetic™** - A suite of powerful situational awareness and target detection capabilities that easily integrate with WESCAM's MX™-Series of imaging sensors.

## **Kinetic™ ISR**

**Ideal for:** Intelligence, Surveillance, Reconnaissance (ISR) missions, Persistent Surveillance, Airborne Law Enforcement (ALE) and Search & Rescue (SAR)

**Kinetic ISR** is WESCAM's map-based sensor management package. It provides operators with advanced sensor control from an intuitive, user-friendly interface. In addition, it features a wide array of surveillance automation and video processing tools. The system is capable of displaying multiple channels of video, with platform, radar, and AIS tracks, as well as video playback and annotation functions. *Kinetic* ISR includes mission planning tools and a state-of-the-art interface. Moving target detection is an optional feature of *Kinetic* ISR.



## **Kinetic™ MTI**

**Ideal for:** ISR Missions and Search Automation

**Kinetic MTI** is a Moving Target Indicator (MTI) tool that detects and annotates objects in a scene that are moving relative to the background. This greatly reduces operator burden on surveillance missions and aids in search automation. *Kinetic* MTI is available as a standalone function, or part of *Kinetic* ISR.



## **Kinetic™ Speed**

**Ideal for:** Regulatory Law Enforcement and Threat Assessment

**Kinetic Speed** is a powerful tool used for an indication of the speed at which a target is moving on the ground or in water. It can be used for a number of objectives, including regulatory compliance and the protection of environmentally sensitive areas.



## Kinetic Applications



> Airborne Persistent Surveillance



> Airborne Law Enforcement



> Airborne Search and Rescue



> Airborne ISR



> Land based Missions



Image courtesy of Austal

> Marine based Missions

## WESCAM *Kinetic*

A basic WESCAM *Kinetic* installation can be executed with a smart display. More advanced, computationally intensive configurations may require an external electronic processor.

### Features of the *Kinetic* EU:

- Quad core main processor
- High performance HD graphics processor
- H.264 video compression (4 channels)
- Ethernet switch (8-port)
- MIL-STD-810, 461 qualified

### Mass/Weight/Dimensions:

11 lbs / 5 kg  
7.5" (W) x 5" (H) x 9.5" (D)  
191mm (W) x 127mm (H) x 242mm (D)

### Power:

12 - 48 VDC (28 VDC recommended)  
40W typical, 70W maximum



Equipment described herein may require Canadian and/or U.S. Government authorization for export purposes. Diversion contrary to Canadian and/or U.S. law is prohibited.